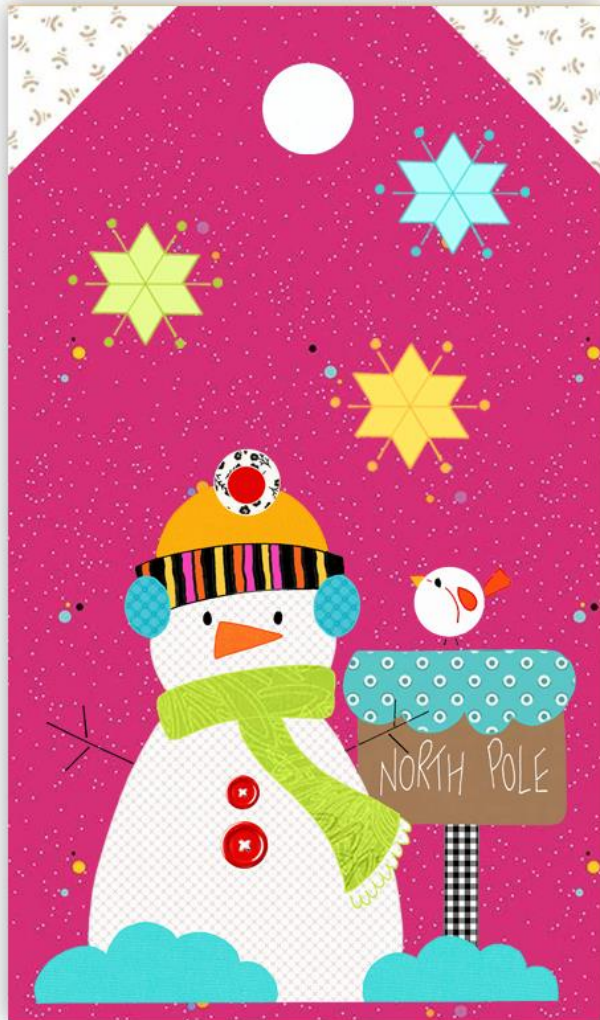




# 2024 CHRISTMAS SEW-ALONG

## Block 4–Snowman

THE RED BOOT QUILT COMPANY



Winter Version



Summer Version



A QUILT PATTERN BY ANTONIE ALEXANDER

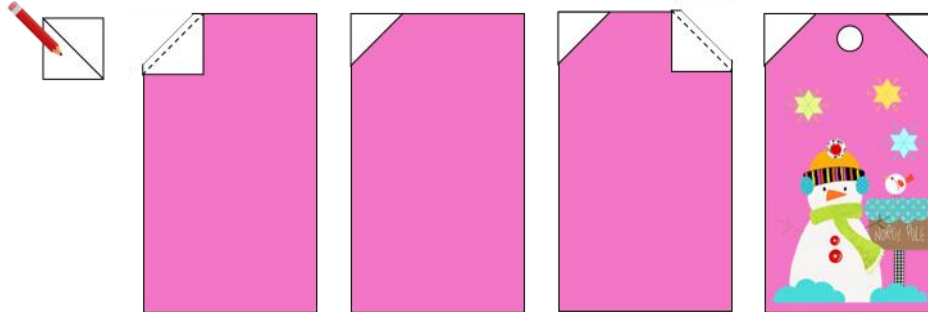
### Cutting Instructions

- Cut (1) 7 1/2in x 12 1/2in rectangle from pink fabric (or the fabric of your choice).
- Cut (2) 2 1/2in squares from soft white fabric.

### How to Make the Block

1. Use a sharp pencil or erasable pen to draw a diagonal line from corner to corner on the wrong side of each of the (2) soft white 2 1/2in squares.
2. Use Diagram 1 as a guide to place a square on the top left-hand corner of the pink fabric. Pin, then stitch diagonally from corner to corner on the drawn line. Trim the excess fabric 1/4in from the stitching line, then flip the fabric triangle open. Press the seams outwards.
3. Repeat for the opposite side.

#### Diagram 1 ▶



4. Fuse the applique to the block, then stitch around the shapes as you did for Block 1. Draw the details on the Snowman and surrounding shapes, then stitch as before.

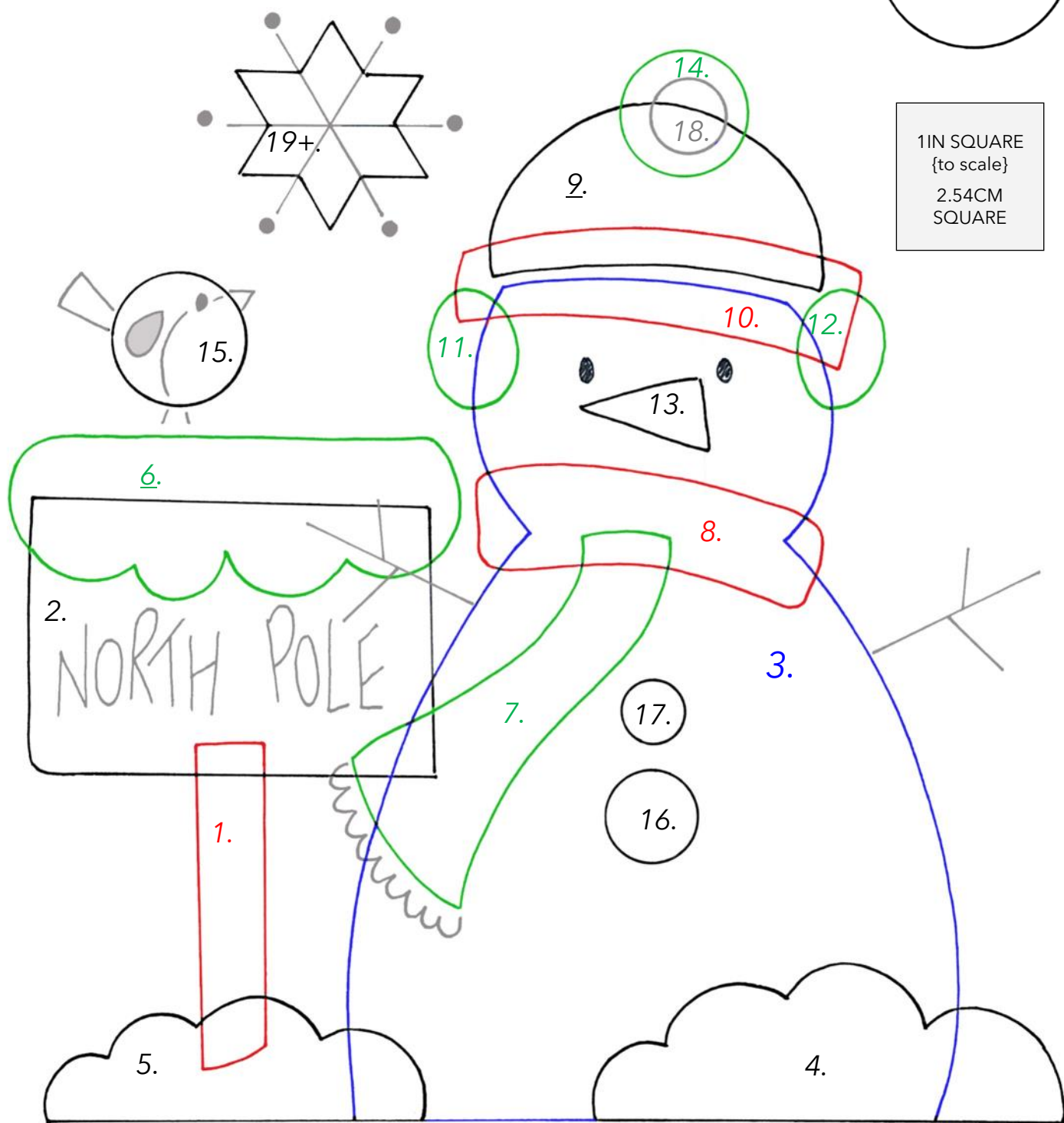
### Notes!

- I've given you the choice of a Winter Christmas quilt or a Summer Christmas quilt. Choose the templates to suit your preferred season.
- The numbers on the templates represent the order in which the appliqué shapes are fused together.
- Use the 1in square, provided throughout, to check the templates have printed correctly and are the right size.
- Use the photograph as your guide to alternative template shapes throughout.
- Backstitch any straight lines and satin stitch any small shapes including the mouth, eyebrows, and nose details throughout.
- I've provided individual template shapes for those of you who like to use printer friendly fusible webbing.
- The templates are reversed for your convenience throughout.

- Adjust the snow drifts/bushes to fit the width of the block. You need to leave approx. 3/8in between the applique shapes and the raw edges of the block.
- Satin stitch the snowman's eyes, the bird's eye, wing, tail, and beak. You can replace any small applique shapes with satin stitch or buttons eg. the small inner circle on the beanie's pom-pom and the buttons on the snowman.
- Backstitch or chain stitch the snowman's arms and scarf fringing. Backstitch the tummy on the bird, the lines on the star, and the lettering on the sign. Stitch French knots on the stars.

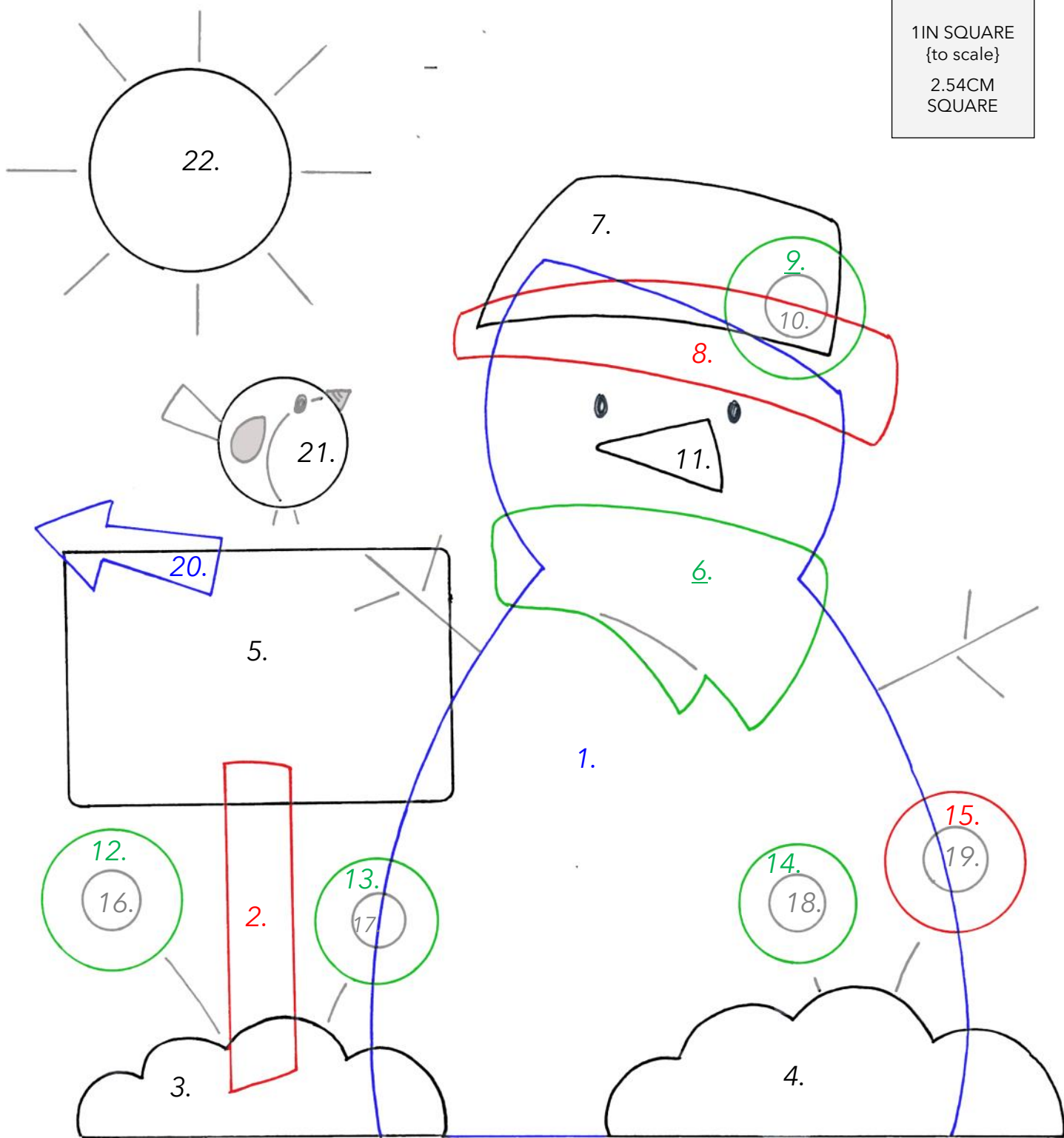
Gift Tag Circle.  
Use this template for each block.

1IN SQUARE  
{to scale}  
2.54CM  
SQUARE



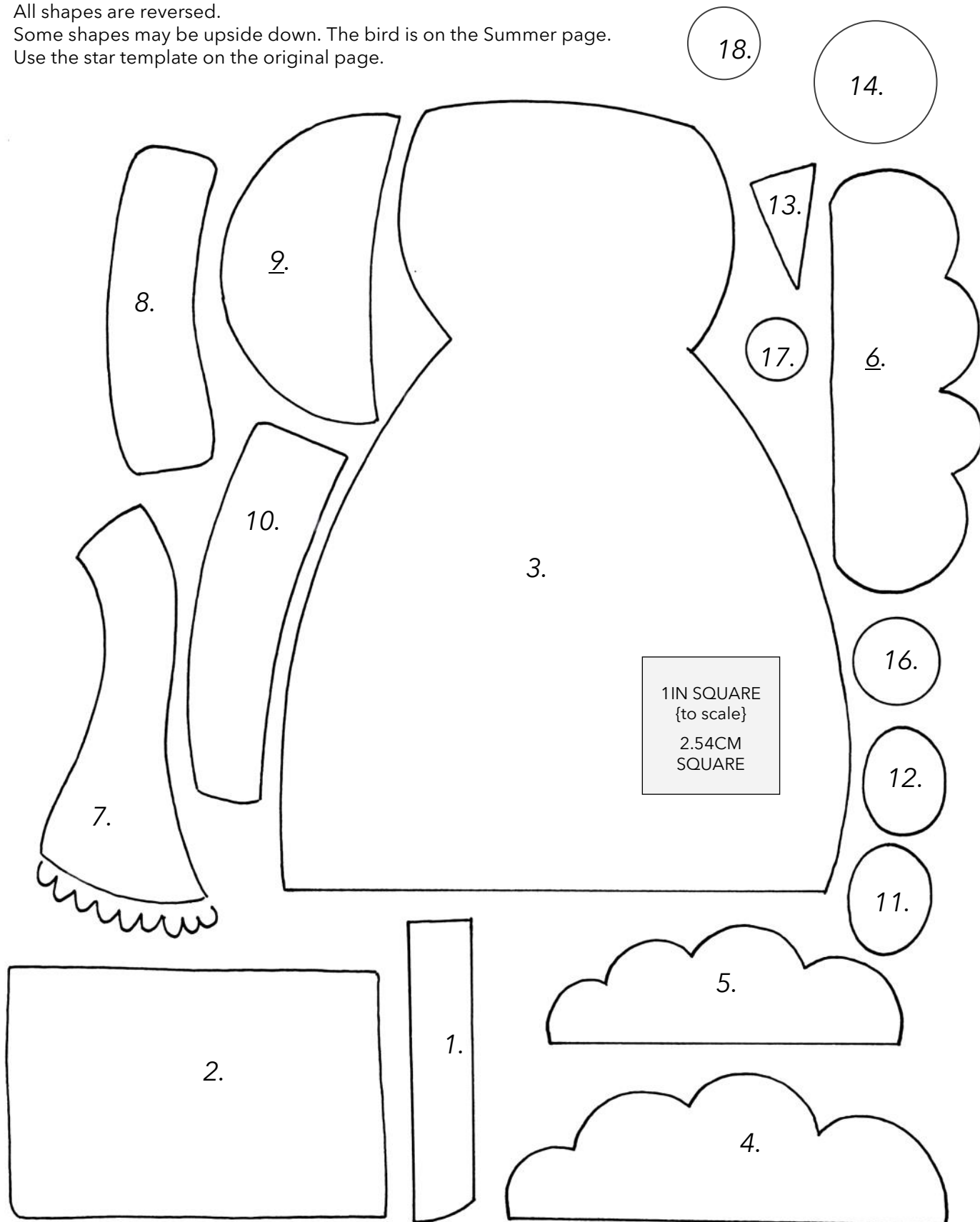


- You can make the Summer snowman a 'scarecrow' or 'sandman' to suit your Summer location.
- Backstitch the lines on the sun and the stems of the flowers. You can satin stitch the centre of the flowers or use buttons if you prefer.
- Stitch the remaining details in the same way as you did for the winter snowman.



1IN SQUARE  
{to scale}  
2.54CM  
SQUARE

- Individual template shapes for your convenience.
- All shapes are reversed.
- Some shapes may be upside down. The bird is on the Summer page.
- Use the star template on the original page.



- Individual template shapes for your convenience.
- All shapes are reversed.
- Some shapes may be upside down. Use the sun template on the original page.

