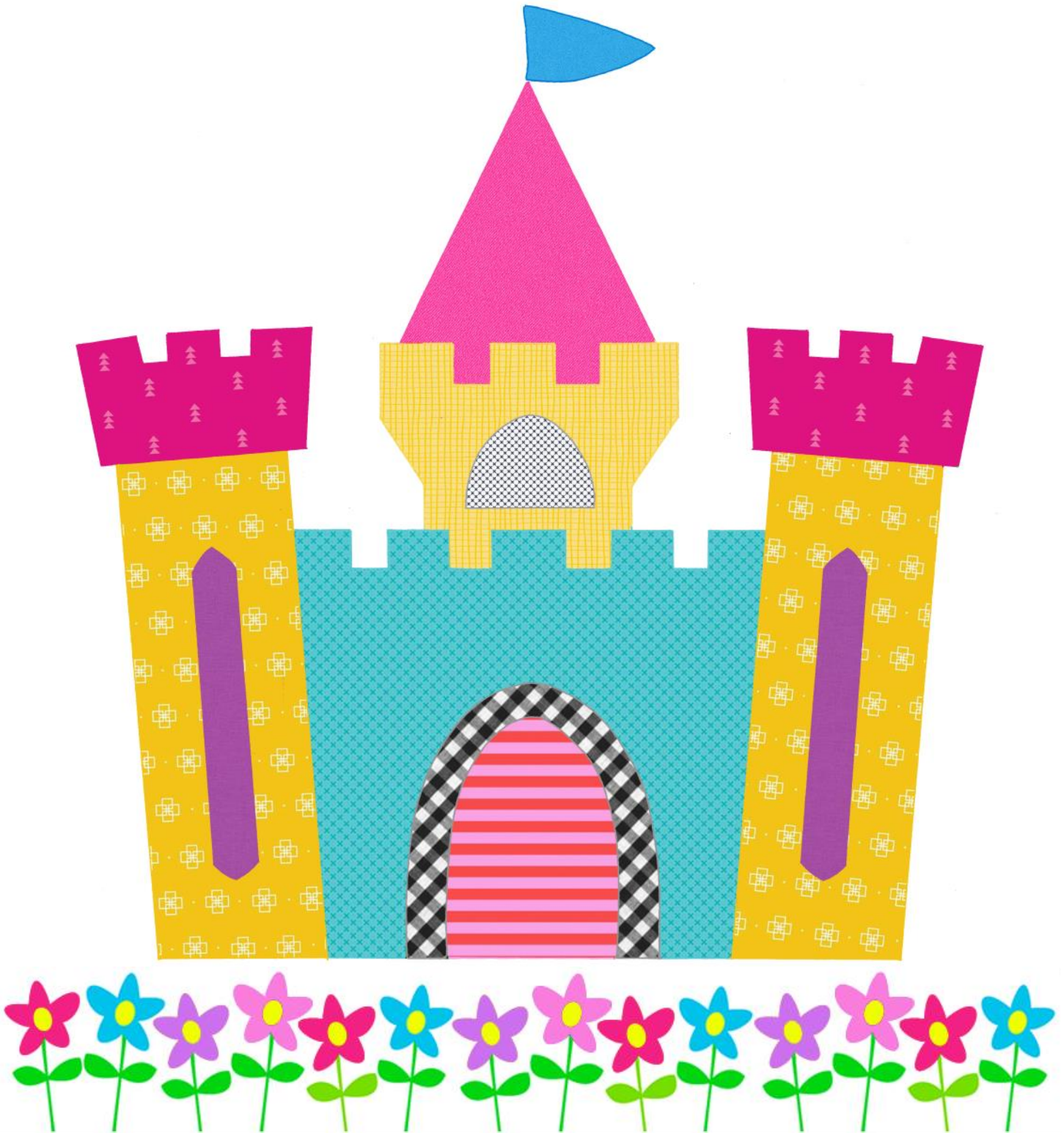


FAIRY TALE SEW-ALONG

BLOCK #4

Brought to you by the lovely people at Theruoweb.

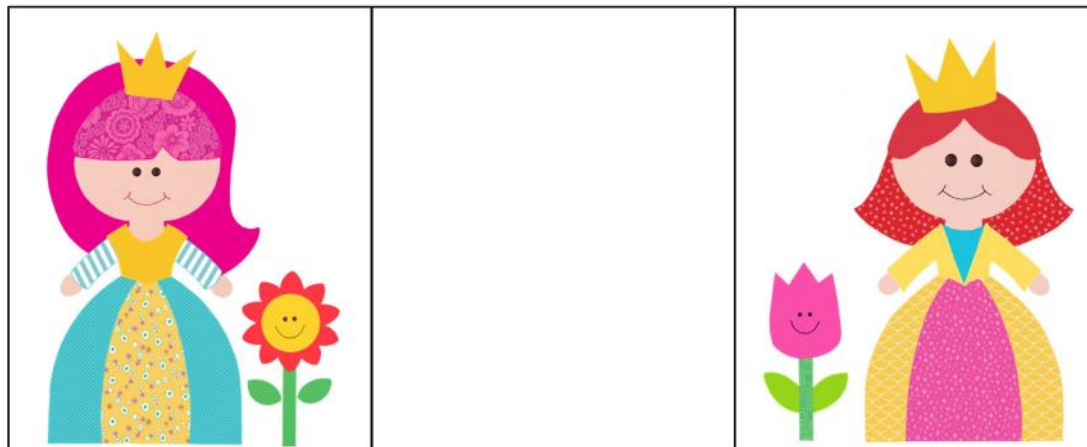


The Red Boot Quilt Company

Notes!

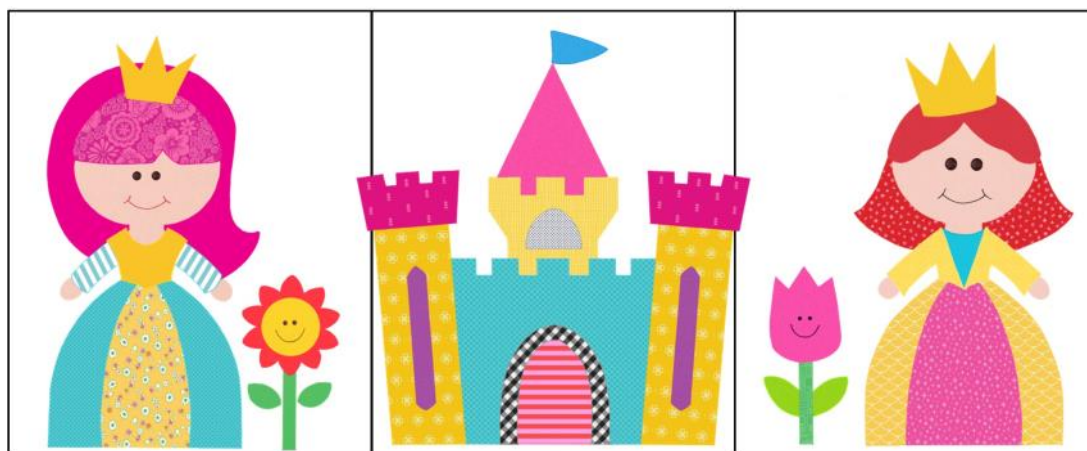
1. Use Diagram 1 as a guide to pin and then sew Block 1, Block 3, and the blank (not appliqued) Block 4 together along the long edges. Press the seams open—this allows the overlapping applique to sit as flat as possible.

Diagram 1 ▼



2. Use Diagram 2 as a guide to applique the castle to the middle block, overlapping the seams where necessary.
3. Stitch around the appliqué shapes using your favourite method. I stitched around my shapes using machine blanket stitch and matching thread. Set aside.

Diagram 2 ▼



Notes!

- ★ I have trimmed my blocks from 10 1/2in x 12 1/2in to measure 10 1/2in x 11 1/2in. I added the extra inch to the height of the blocks to allow for applique shrinkage.

My background fabric isn't shrinking at all this time around, it's a very tight weave, therefore I have extra fabric at the top of the blocks.

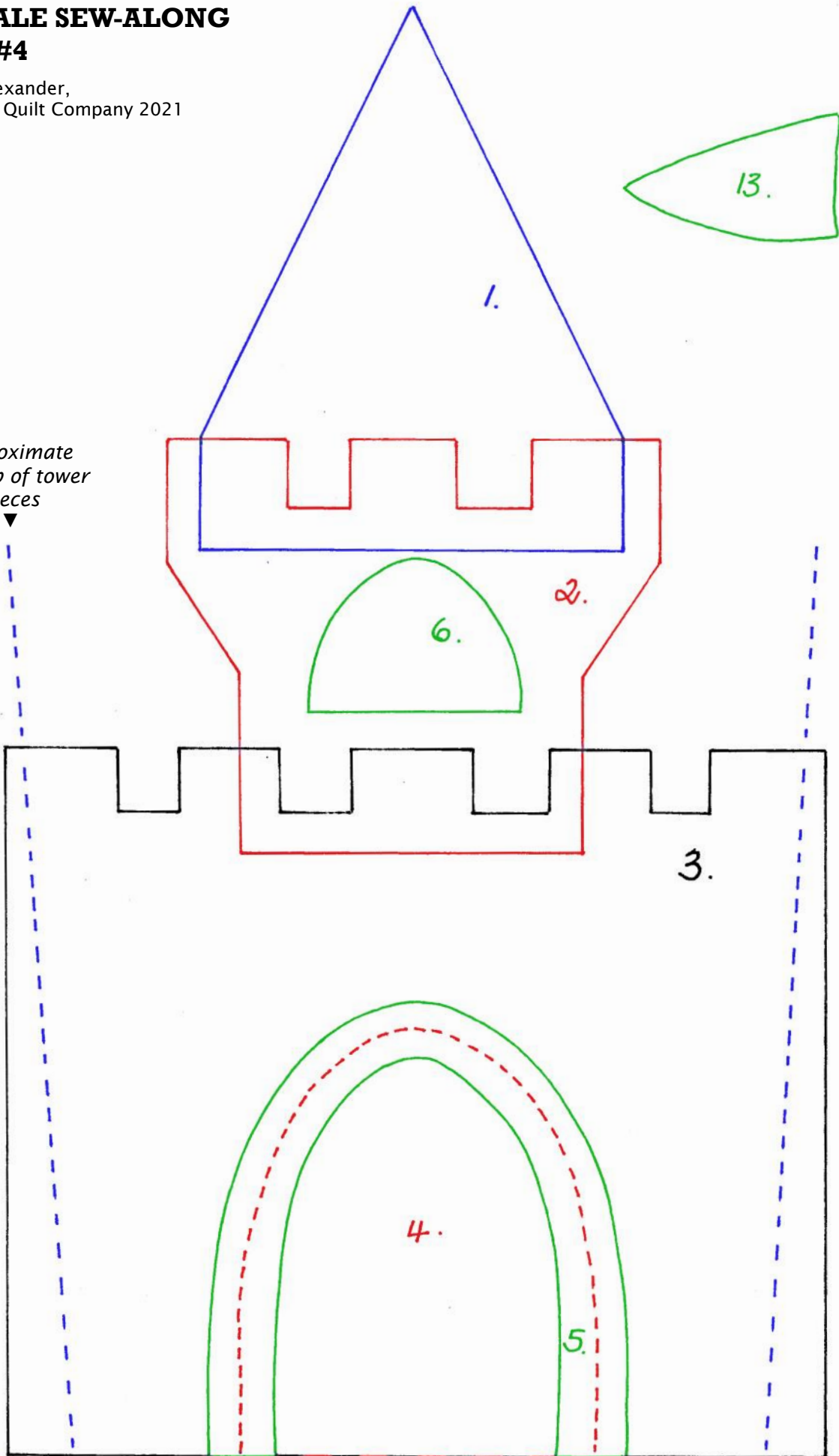
I leave this decision up to you, it won't make a difference to the finished quilt except for a few inches in length. Message me if you are unsure!

FAIRY TALE SEW-ALONG

BLOCK #4

© Antonie Alexander,
The Red Boot Quilt Company 2021

*Approximate
overlap of tower
pieces*

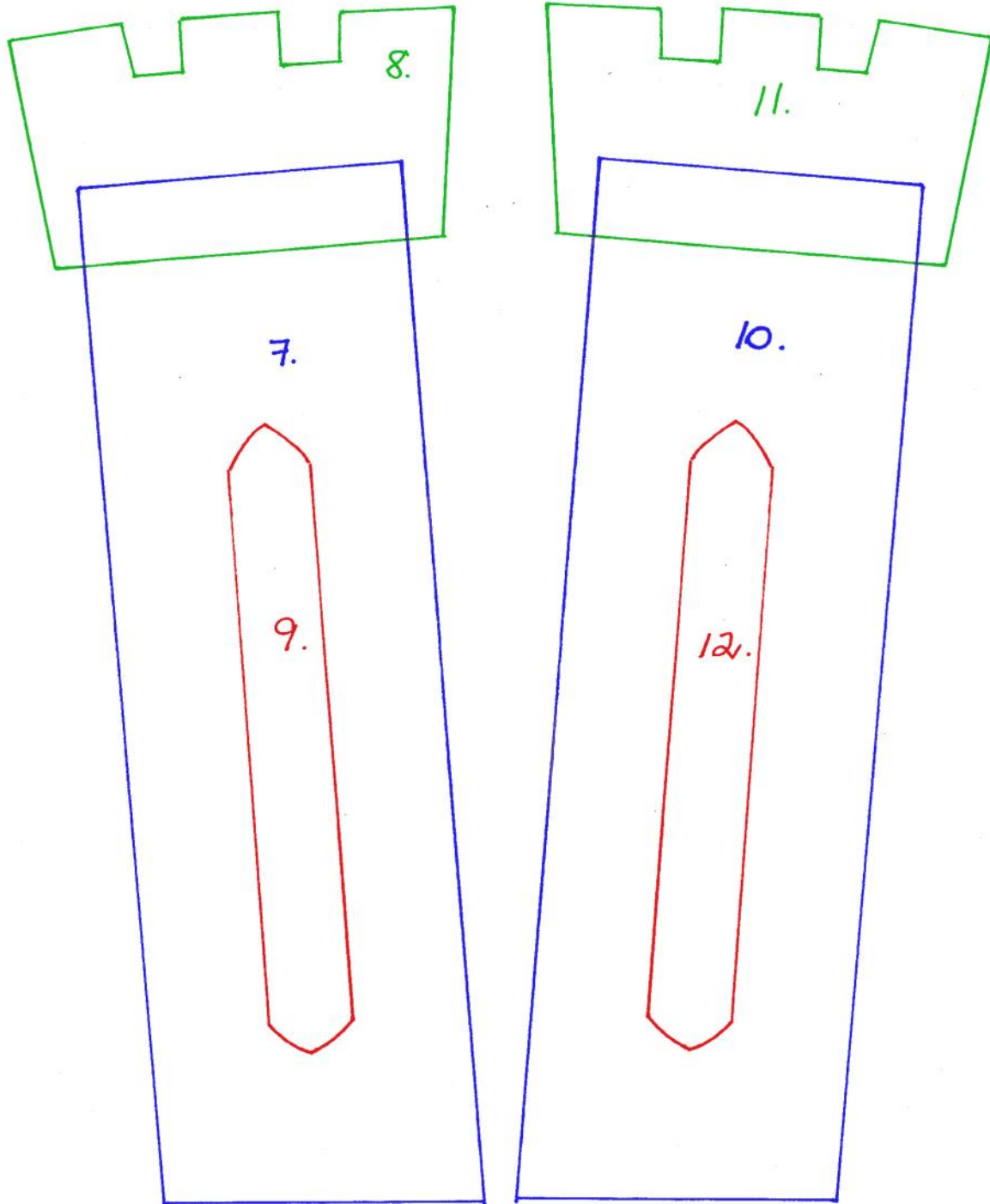


FAIRY TALE SEW-ALONG—BLOCK #4

© Antonie Alexander, The Red Boot Quilt Company 2021

Notes!

The numbers represent the order in which the appliqué shapes are fused together.



* therm.o.web

adhesives, interfacing and more...



This is a free pattern provided by
© The Red Boot Quilt Company 2021
STRICTLY NOT FOR RESALE OR DISTRIBUTION

* therm.o.web

adhesives, interfacing and more...